

KMT Waterjet Cutting Pumps

STREAMLINE® SL-VI 200 60,000psi/200hp

ADVANCED PUMPS FOR DEMANDING, HIGH PRESSURE WATER APPLICATIONS

The STREAMLINE® SL-VI 200 pump from KMT Waterjet is designed for massive cutting jobs, ease-of-use, simpler maintenance and lower operating costs.



More Advanced Precision for Smoother, Reliable Operation

The KMT Intensifier - Made in our own facility in the U.S.A. for the best control over quality and extreme precision, the intensifier pressurizes water to a level up to 60,000 psi for continuous high performance cutting.

Just Two Intensifiers for Full Power - Each can use up to 100 hp to deliver 2 gallons per minute (gpm). Because the intensifiers are larger, they stroke slower, just 71 strokes a minute, for smoother performance and longer seal life. The pumps even sound smoother.

200 Horsepower	4 Gallons per Minute (gpm)
----------------	----------------------------

Stacked Intensifiers - Exclusive design has the intensifiers close to the front for easiest access.

Big Attenuator Capacity - 0.8 Gallons (with room for up to 1.5 gallons) provides better, more consistent pressure signal for smoother cuts or more consistent cleaning.

Proportional Pressure Control - A standard feature on the 200 hp pump enables fast, automatic pressure changes.

Location of Intensifiers - Upfront and easy to access. Maintenance people will appreciate the location and design at the first seal change!

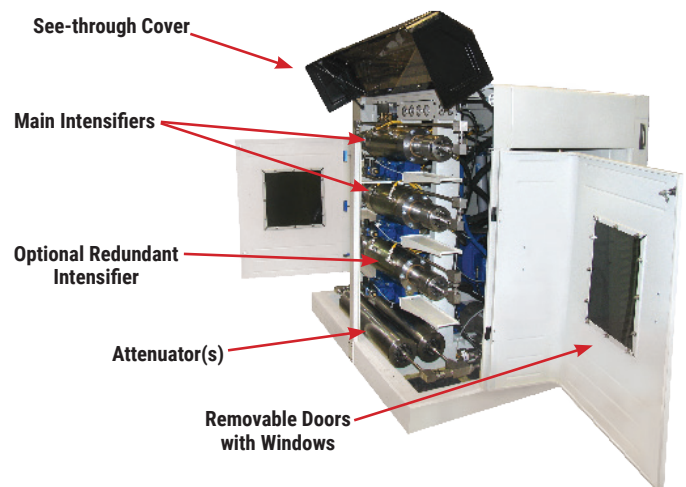
Reserve Mode - Add an optional third intensifier as a back-up source of pressure. The third intensifier can be used when one (or two) of the others needs to be taken off-line for maintenance. Each intensifier can use up to 100 hp to deliver up to 2 gpm.

The Right Pump Matters

Customer-Focused Design - Intensifiers are located at the front of the machine for easy access.

Lower Cost per Gallon - The costs of one pump (both operating cost and purchase cost) are lower than several smaller pumps.

More Standard Features - The STREAMLINE® SL-VI 200 pump has more standard features, including soft-start, proportional control, see-through doors.



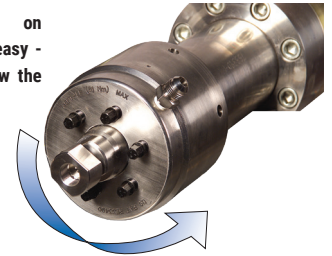
KMT
WATERJET

Technical Specifications

SL-VI 200 System Information	
Nominal Power Rate	200hp
Maximum Continuous Pressure	60,000psi (4,137 bar)
Max. High Pressure Water Output	4 gpm (14 LPM)
Maximum Single Orifice Diameter	0.028" / 0.71mm
Number of Language Options on Display <small>(English, Spanish, German, Italian, Swedish)</small>	5
Control Voltage & Power Supply	24 VDC
Max. Noise Level/Operator's Noise Level	85/84 db
Ambient Operating Temperature	40-100 F / 4-38 C
Length (inches)	91" / 231 cm
Width (inches)	67" / 170 cm
Height (inches)	70" / 178 cm
Weight (with oil)	9220 lbs / 4182 kg
Cutting Water	
Minimum Inlet Cutting Water Flow	16 gpm / 61 lpm
Minimum Inlet Cutting Water Pressure (psi)	35 psi / 2.5 bar
Plunger Diameter (inches)	1.125" / 28.6mm
Max. Nominal Strokes per Minute	71
Accumulator Volume +	0.8 Gallon / 3 Liters <small>(capacity for 1.6G / 6L)</small>
Hydraulic System	
Max. Hydraulic Pressure (at max water pressure)	2650psi (183 bar)
Hydraulic Reservoir Capacity	125 Gallons (473 Liters)
Hydraulic Pump Flow Rate at Max Output	2x46 gpm (174 lpm)
Cooling System	
Minimum Cooling Water Pressure	35 psi (2.5 bar)
Options & Other Features	
Booster Pump (adjustable & protected)	standard
Energy Saving Soft Start	standard
Oil / Air-Cooler (Closed Loop Cooling System)	option
Redundant Topworks	option
Proportional Control	standard
Remote Online Diagnostics (via Modem)	option
EQUALIZER Multi-pump Balancing Kit	option

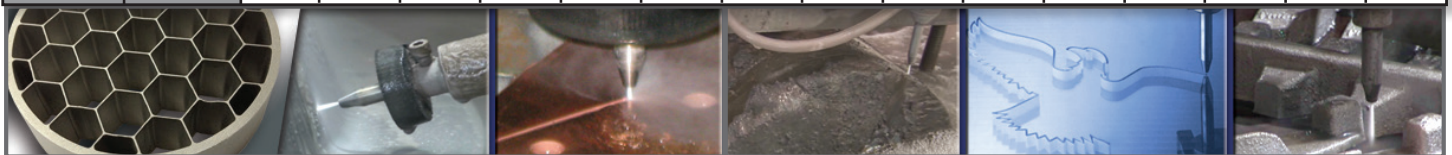


Access to seals on STREAMLINE® pumps is easy - simply rotate and unscrew the high pressure cylinder.



Number of Cutting Heads Possible @ Maximum Pressure

Orifice Size	Inch	0.004	0.006	0.007	0.008	0.009	0.01	0.011	0.012	0.013	0.015	0.017	0.019	0.02	0.023	0.026
	mm	0.10	0.15	0.18	0.20	0.23	0.25	0.28	0.30	0.33	0.38	0.43	0.48	0.51	0.58	0.66
Pump Size	200hp	43	19	14	10	8	7	5	4	4	3	2	1	1	1	1



THE HEART OF WATERJET CUTTING

KMT Waterjet Systems Inc.
 635 West 12th Street
 Baxter Springs, KS 66713 USA
 620-856-2151 • 800-826-9274
sales@kmtwaterjet.com

kmtwaterjet.com



01/2022
 SL-VI 200 HP Pump